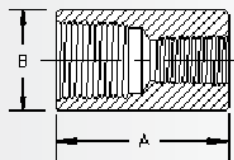


## THREADED FITTINGS

### REDUCERS

ASTM / ANSI A/SA105  
ASME B 16.11

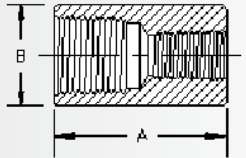


| Class 3000.   |             |             |               |
|---|-------------|-------------|---------------|
| Pipe Size   | Dimension A | Dimension B | Approx. Wt. # |
| 1/4 X 1/8   | 1 3/8       | 3/4         | 0.1           |
| 3/8 X 1/8<br>3/8 X 1/4  | 1 1/2       | 7/8         | 0.13          |
| 1/2 X 1/8<br>1/2 X 1/4<br>1/2 X 3/8   | 1 7/8       | 1 1/8       | 0.28          |
| 3/4 X 1/8<br>3/4 X 1/4<br>3/4 X 3/8<br>3/4 X 1/2  | 2           | 1 3/8       | 0.42          |
| 1 X 1/8<br>1 X 1/4<br>1 X 3/8<br>1 X 1/2<br>1 X 3/4   | 2 3/8       | 1 3/4       | 0.85          |
| 1-1/4 X 1/8<br>1-1/4 X 1/4<br>1-1/4 X 3/8<br>1-1/4 X 1/2<br>1-1/4 X 3/4<br>1-1/4 X 1                  | 2 5/8       | 2 1/4       | 1.50          |
| 1-1/2 X 1/8<br>1-1/2 X 1/4<br>1-1/2 X 3/8<br>1-1/2 X 1/2<br>1-1/2 X 3/4<br>1-1/2 X 1<br>1-1/2 X 1-1/4 | 3 1/8       | 2 1/2       | 2.19          |
| 2 X 1/8<br>2 X 1/4<br>2 X 3/8<br>2 X 1/2<br>2 X 3/4<br>2 X 1<br>2 X 1-1/4<br>2 X 1-1/2                | 3 3/8       | 3           | 3.02          |

## THREADED FITTINGS

### REDUCERS

ASTM / ANSI A/SA105  
ASME B 16.11



| Class 3000.   |             |             |               |
|---|-------------|-------------|---------------|
| Pipe Size   | Dimension A | Dimension B | Approx. Wt. # |
| 2-1/2 X 1/8<br>2-1/2 X 1/4<br>2-1/2 X 3/8<br>2-1/2 X 1/2<br>2-1/2 X 3/4<br>2-1/2 X 1<br>2-1/2 X 1-1/4<br>2-1/2 X 1-1/2<br>2-1/2 X 2 | 3 5/8       | 3 5/8       | 4.56          |
| 3 X 1/8<br>3 X 1/4<br>3 X 3/8<br>3 X 1/2<br>3 X 3/4<br>3 X 1<br>3 X 1-1/4<br>3 X 1-1/2<br>3 X 2<br>3 X 2-1/2                        | 4 1/4       | 4 1/4       | 6.79          |
| 4 X 1/8<br>4 X 1/4<br>4 X 3/8<br>4 X 1/2<br>4 X 3/4<br>4 X 1<br>4 X 1-1/4<br>4 X 1-1/2<br>4 X 2<br>4 X 2-1/2<br>4 X 3<br>4 X 3-1/2  | 4 3/4       | 5 1/2       | 12.00         |