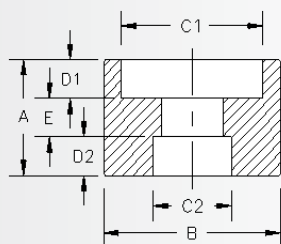


## SOCKET WELD FITTINGS

### REDUCERS

ASTM / ANSI A/SA105  
ASME B 16.11

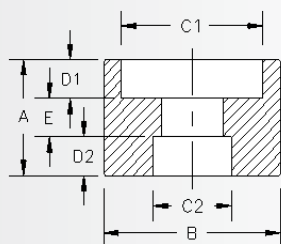


Class 3000.								
Pipe Size	Dimension A	Dimension B	Dimension C1	Dimension C2	Dimension D1	Dimension D2	Dimension E	Approx. Wt. #
1/4 X 1/8	1.030	0.875	.555/.575	.420/.430	0.395	0.395	0.250	0.18
3/8 X 1/8 3/8 X 1/4	1.030	1.063	.690/.710	.420/.430 .555/.575	0.395	0.395	0.250	0.18
1/2 X 1/8 1/2 X 1/4 1/2 X 3/8	1.095	1.250	.855/.875	.420/.430 .555/.575 .690/.710	0.395	0.395	0.380	0.26
3/4 X 1/8 3/4 X 1/4 3/4 X 3/8 3/4 X 1/2	1.335	1.500	1.065/1.085	.420/.430 .555/.575 .690/.710 .855/.875	0.515	0.515	0.380	0.41
1 X 1/8 1 X 1/4 1 X 3/8 1 X 1/2 1 X 3/4	1.415	1.875	1.330/1.350	.420/.430 .555/.575 .690/.710 .855/.875 1.065/1.085	0.515	0.515	0.500	0.65
1-1/4 X 1/8 1-1/4 X 1/4 1-1/4 X 3/8 1-1/4 X 1/2 1-1/4 X 3/4 1-1/4 X 1	1.415	2.250	1.675/1.695	.420/.430 .555/.575 .690/.710 .855/.875 1.065/1.085 1.330/1.350	0.515	0.515	0.500	0.82
1-1/2 X 1/8 1-1/2 X 1/4 1-1/2 X 3/8 1-1/2 X 1/2 1-1/2 X 3/4 1-1/2 X 1 1-1/2 X 1-1/4	1.415	2.500	1.915/1.935	.420/.430 .555/.575 .690/.710 .855/.875 1.065/1.085 1.330/1.350 1.675/1.695	0.515	0.515	0.500	0.92
2 X 1/8 2 X 1/4 2 X 3/8 2 X 1/2 2 X 3/4 2 X 1 2 X 1-1/4 2 X 1-1/2	1.905	3.000	2.406/2.426	.420/.430 .555/.575 .690/.710 .855/.875 1.065/1.085 1.330/1.350 1.675/1.695 1.915/1.935	0.635	0.635	0.750	1.62

## SOCKET WELD FITTINGS

### REDUCERS

ASTM / ANSI A/SA105  
ASME B 16.11



Class 3000.								
Pipe Size	Dimension A	Dimension B	Dimension C1	Dimension C2	Dimension D1	Dimension D2	Dimension E	Approx. Wt. #
2-1/2 X 1/8 * 2-1/2 X 1/4 * 2-1/2 X 3/8 * 2-1/2 X 1/2 * 2-1/2 X 3/4 * 2-1/2 X 1 * 2-1/2 X 1-1/4 * 2-1/2 X 1-1/2 * 2-1/2 X 2 *	1.865	3.625	2.906/2.931	.420/.430 .555/.575 .690/.710 .855/.875 1.065/1.085 1.330/1.350 1.675/1.695 1.915/1.935 2.406/2.426	0.635	0.635	0.750	2.61
3 X 1/8 * 3 X 1/4 * 3 X 3/8 * 3 X 1/2 * 3 X 3/4 * 3 X 1 * 3 X 1-1/4 * 3 X 1-1/2 * 3 X 2 * 3 X 2-1/2 *	1.865	4.312	3.535/3.550	.420/.430 .555/.575 .690/.710 .855/.875 1.065/1.085 1.330/1.350 1.675/1.695 1.915/1.935 2.406/2.426 2.906/2.931	0.635	0.635	0.750	3.13
3-1/2 X 1/8 * 3-1/2 X 1/4 * 3-1/2 X 3/8 * 3-1/2 X 1/2 * 3-1/2 X 3/4 * 3-1/2 X 1 * 3-1/2 X 1-1/4 * 3-1/2 X 1-1/2 * 3-1/2 X 2 * 3-1/2 X 2-1/2 * 3-1/2 X 3 *	2.125	5.000	4.040/4.055	.420/.430 .555/.575 .690/.710 .855/.875 1.065/1.085 1.330/1.350 1.675/1.695 1.915/1.935 2.406/2.426 2.906/2.931 3.535/3.550	0.765	0.765	0.750	4.15
4 X 1/8 * 4 X 1/4 * 4 X 3/8 * 4 X 1/2 * 4 X 3/4 * 4 X 1 * 4 X 1-1/4 * 4 X 1-1/2 * 4 X 2 * 4 X 2-1/2 * 4 X 3 * 4 X 3-1/2 *	2.125	5.500	4.545/4.570	.420/.430 .555/.575 .690/.710 .855/.875 1.065/1.085 1.330/1.350 1.675/1.695 1.915/1.935 2.406/2.426 2.906/2.931 3.535/3.550 4.040/4.055	0.765	0.765	0.750	5.17