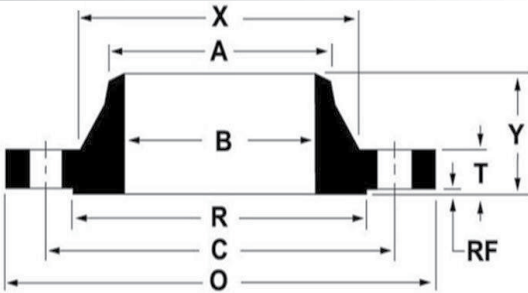


FLANGES

ANSI B16.5 CLASS 300 WELDING NECK FLANGES



All dimensions are in inches.

These flanges will be supplied with a 1/16" raised face unless otherwise specified.

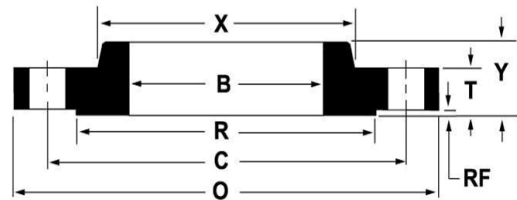
Flat face option available.

Standard Bore will be finished unless otherwise specified.

Nominal Pipe Size	Outside Diameter (O)	Thickness (T)	Raised Face Diameter (R)	Length Thru Hub (Y)	Point of Weld (A)	Hub Diameter (X)	Bore (B)	Approximate Weight (lbs)	Bolt Circle (C)	Number of Holes	Diameter of Holes
inch	inch	inch	inch	inch	inch	inch	inch	lbs	inch	count	inch
1/2"	3.75"	0.56"	1.38"	2.06"	0.84"	1.50"	0.62"	2	2.63"	4	0.63"
3/4"	4.63"	0.63"	1.69"	2.25"	1.05"	1.88"	0.82"	3	3.25"	4	0.75"
1"	4.88"	0.69"	2.00"	2.44"	1.32"	2.13"	1.05"	4	3.50"	4	0.75"
1 1/4"	5.25"	0.75"	2.50"	2.56"	1.66"	2.50"	1.38"	5	3.88"	4	0.75"
1 1/2"	6.13"	0.81"	2.88"	2.69"	1.90"	2.75"	1.61"	7	4.50"	4	0.88"
2"	6.50"	0.88"	3.63"	2.75"	2.38"	3.31"	2.07"	9	5.00"	8	0.75"
2 1/2"	7.50"	1.00"	4.13"	3.00"	2.88"	3.94"	2.47"	12	5.88"	8	0.88"
3"	8.25"	1.13"	5.00"	3.13"	3.50"	4.63"	3.07"	15	6.63"	8	0.88"
3 1/2"	9.00"	1.19"	5.50"	3.19"	4.00"	5.25"	3.55"	18	7.25"	8	0.88"
4"	10.00"	1.25"	6.19"	3.38"	4.50"	5.75"	4.03"	25	7.88"	8	0.88"
5"	11.00"	1.38"	7.31"	3.88"	5.56"	7.00"	5.05"	32	9.25"	8	0.88"
6"	12.50"	1.44"	8.50"	3.88"	6.63"	8.13"	6.07"	42	10.63"	12	0.88"
8"	15.00"	1.63"	10.63"	4.38"	8.63"	10.25"	7.98"	67	13.00"	12	1.00"
10"	17.50"	1.88"	12.75"	4.63"	10.75"	12.63"	10.02"	91	15.25"	16	1.13"
12"	20.50"	2.00"	15.00"	5.13"	12.75"	14.75"	12.00"	140	17.75"	16	1.25"
14"	23.00"	2.13"	16.25"	5.63"	14.00"	16.75"	13.25"	180	20.25"	20	1.25"
16"	25.50"	2.25"	18.50"	5.75"	16.00"	19.00"	15.25"	250	22.50"	20	1.38"
18"	28.00"	2.38"	21.00"	6.25"	18.00"	21.00"	17.25"	320	24.75"	24	1.38"
20"	30.50"	2.50"	23.00"	6.38"	20.00"	23.13"	19.25"	400	27.00"	24	1.38"
22"	33.00"	2.63"	25.25"	6.50"	22.00"	25.25"	21.25"	465	29.25"	24	1.63"
24"	36.00"	2.75"	27.25"	6.63"	24.00"	27.63"	23.25"	580	32.00"	24	1.63"

FLANGES

ANSI B16.5 CLASS 300 SLIP-ON FLANGES



All dimensions are in inches.

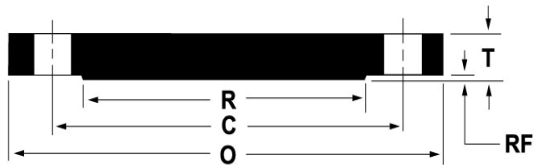
These flanges will be supplied with a 1/16" raised face unless otherwise specified.

Flat face option available

Nominal Pipe Size	Outside Diameter (O)	Thickness (T)	Raised Face Diameter (R)	Length Thru Hub (Y)	Hub Diameter (X)	Bore (B)	Approximate Weight (lbs)	Bolt Circle (C)	Number of Holes	Diameter of Holes
inch	inch	inch	inch	inch	inch	inch	lbs	inch	count	inch
1/2"	3.75"	0.56"	1.38"	0.88"	1.50"	0.88"	2	2.63"	4	0.63"
3/4"	4.63"	0.63"	1.69"	1.00"	1.88"	1.09"	3	3.25"	4	0.75"
1"	4.88"	0.69"	2.00"	1.06"	2.13"	1.36"	3	3.50"	4	0.75"
1 1/4"	5.25"	0.75"	2.50"	1.06"	2.50"	1.70"	4	3.88"	4	0.75"
1 1/2"	6.13"	0.81"	2.88"	1.19"	2.75"	1.95"	6	4.50"	4	0.88"
2"	6.50"	0.88"	3.63"	1.31"	3.31"	2.44"	7	5.00"	8	0.75"
2 1/2"	7.50"	1.00"	4.13"	1.50"	3.94"	2.94"	10	5.88"	8	0.88"
3"	8.25"	1.13"	5.00"	1.69"	4.63"	3.57"	13	6.63"	8	0.88"
3 1/2"	9.00"	1.19"	5.50"	1.75"	5.25"	4.07"	17	7.25"	8	0.88"
4"	10.00"	1.25"	6.19"	1.88"	5.75"	4.57"	22	7.88"	8	0.88"
5"	11.00"	1.38"	7.31"	2.00"	7.00"	5.66"	28	9.25"	8	0.88"
6"	12.50"	1.44"	8.50"	2.06"	8.13"	6.72"	39	10.63"	12	0.88"
8"	15.00"	1.63"	10.63"	2.44"	10.25"	8.72"	58	13.00"	12	1.00"
10"	17.50"	1.88"	12.75"	2.62"	12.63"	10.88"	81	15.25"	16	1.13"
12"	20.50"	2.00"	15.00"	2.88"	14.75"	12.88"	115	17.75"	16	1.25"
14"	23.00"	2.13"	16.25"	3.00"	16.75"	14.14"	165	20.25"	20	1.25"
16"	25.50"	2.25"	18.50"	3.25"	19.00"	16.16"	190	22.50"	20	1.38"
18"	28.00"	2.38"	21.00"	3.50"	21.00"	18.18"	250	24.75"	24	1.38"
20"	30.50"	2.50"	23.00"	3.75"	23.13"	20.20"	315	27.00"	24	1.38"
22"	33.00"	2.63"	25.25"	4.00"	25.25"	22.22"	370	29.25"	24	1.63"
24"	36.00"	2.75"	27.25"	4.19"	27.63"	24.25"	475	32.00"	24	1.63"

FLANGES

ANSI B16.5 CLASS 300 BLIND FLANGES



Nominal Pipe Size	Outside Diameter (O)	Thickness (T)	Raised Face Diameter (R)	Approximate Weight (lbs)	Bolt Circle (C)	Number of Holes	Diameter of Holes
inch	inch	inch	inch	lbs	inch	count	inch
1/2"	3.75"	0.56"	1.38"	2	2.63"	4	0.63"
3/4"	4.63"	0.63"	1.69"	3	3.25"	4	0.75"
1"	4.88"	0.69"	2.00"	3	3.50"	4	0.75"
1 1/4"	5.25"	0.75"	2.50"	4	3.88"	4	0.75"
1 1/2"	6.13"	0.81"	2.88"	6	4.50"	4	0.88"
2"	6.50"	0.88"	3.63"	8	5.00"	8	0.75"
2 1/2"	7.50"	1.00"	4.13"	12	5.88"	8	0.88"
3"	8.25"	1.13"	5.00"	16	6.63"	8	0.88"
3 1/2"	9.00"	1.19"	5.50"	21	7.25"	8	0.88"
4"	10.00"	1.25"	6.19"	27	7.88"	8	0.88"
5"	11.00"	1.38"	7.31"	35	9.25"	8	0.88"
6"	12.50"	1.44"	8.50"	50	10.63"	12	0.88"
8"	15.00"	1.63"	10.63"	81	13.00"	12	1.00"
10"	17.50"	1.88"	12.75"	124	15.25"	16	1.13"
12"	20.50"	2.00"	15.00"	185	17.75"	16	1.25"
14"	23.00"	2.13"	16.25"	250	20.25"	20	1.25"
16"	25.50"	2.25"	18.50"	295	22.50"	20	1.38"
18"	28.00"	2.38"	21.00"	395	24.75"	24	1.38"
20"	30.50"	2.50"	23.00"	505	27.00"	24	1.38"
22"	33.00"	2.63"	25.25"	640	29.25"	24	1.63"
24"	36.00"	2.75"	27.25"	790	32.00"	24	1.63"

All dimensions are in inches.

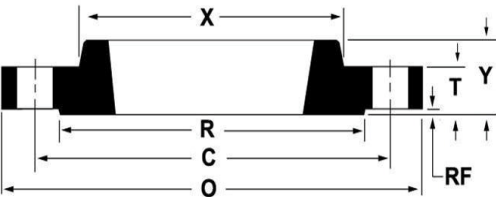
These flanges will be supplied with a 1/16" raised face unless otherwise specified.

Flat face option available

FLANGES

ANSI B16.5 CLASS 300 THREADED FLANGES

Nominal Pipe Size	Outside Diameter (O)	Thickness (T)	Raised Face Diameter (R)	Length Thru Hub (Y)	Hub Diameter (X)	Approximate Weight (lbs)	Bolt Circle (C)	Number of Holes	Diameter of Holes
inch	inch	inch	inch	inch	inch	lbs	inch	count	inch
1/2"	3.75"	0.56"	1.38"	0.88"	1.50"	2	2.63"	4	0.63"
3/4"	4.63"	0.63"	1.69"	1.00"	1.88"	3	3.25"	4	0.75"
1"	4.88"	0.69"	2.00"	1.06"	2.13"	3	3.50"	4	0.75"
1 1/4"	5.25"	0.75"	2.50"	1.06"	2.50"	4	3.88"	4	0.75"
1 1/2"	6.13"	0.81"	2.88"	1.19"	2.75"	6	4.50"	4	0.88"
2"	6.50"	0.88"	3.63"	1.31"	3.31"	7	5.00"	8	0.75"
2 1/2"	7.50"	1.00"	4.13"	1.50"	3.94"	10	5.88"	8	0.88"
3"	8.25"	1.13"	5.00"	1.69"	4.63"	13	6.63"	8	0.88"
3 1/2"	9.00"	1.19"	5.50"	1.75"	5.25"	17	7.25"	8	0.88"
4"	10.00"	1.25"	6.19"	1.88"	5.75"	22	7.88"	8	0.88"
5"	11.00"	1.38"	7.31"	2.00"	7.00"	28	9.25"	8	0.88"
6"	12.50"	1.44"	8.50"	2.06"	8.13"	39	10.63"	12	0.88"
8"	15.00"	1.63"	10.63"	2.44"	10.25"	58	13.00"	12	1.00"
10"	17.50"	1.88"	12.75"	2.62"	12.63"	81	15.25"	16	1.13"
12"	20.50"	2.00"	15.00"	2.88"	14.75"	115	17.75"	16	1.25"
14"	23.00"	2.13"	16.25"	3.00"	16.75"	165	20.25"	20	1.25"
16"	25.50"	2.25"	18.50"	3.25"	19.00"	190	22.50"	20	1.38"
18"	28.00"	2.38"	21.00"	3.50"	21.00"	250	24.75"	24	1.38"
20"	30.50"	2.50"	23.00"	3.75"	23.13"	315	27.00"	24	1.38"
22"	33.00"	2.63"	25.25"	4.00"	25.25"	370	29.25"	24	1.63"
24"	36.00"	2.75"	27.25"	4.19"	27.63"	475	32.00"	24	1.63"



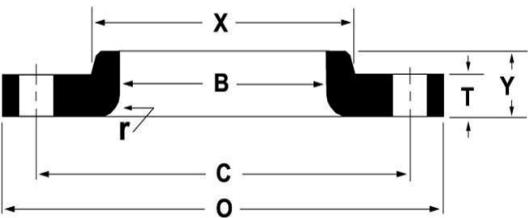
All dimensions are in inches.

These flanges will be supplied with a 1/16" raised face unless otherwise specified.

Flat face option available

FLANGES

ANSI B16.5 CLASS 300 LAP JOINT FLANGES



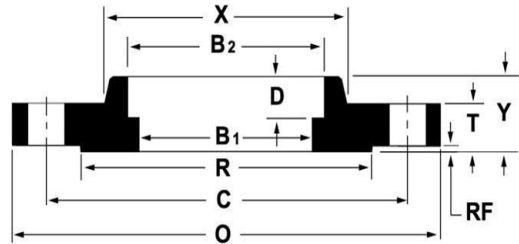
All dimensions are in inches.

Nominal Pipe Size	Outside Diameter (O)	Thickness (T)	Length Thru Hub (Y)	Hub Diameter (X)	Radius (r)	Bore (B)	Approximate Weight (lbs)	Bolt Circle (C)	Number of Holes	Diameter of Holes
inch	inch	inch	inch	inch	inch	inch	lbs	inch	count	inch
1/2"	3.75"	0.56"	0.88"	1.50"	0.13"	0.90"	2	2.63"	4	0.63"
3/4"	4.63"	0.63"	1.00"	1.88"	0.13"	1.11"	3	3.25"	4	0.75"
1"	4.88"	0.69"	1.06"	2.13"	0.13"	1.38"	3	3.50"	4	0.75"
1 1/4"	5.25"	0.75"	1.06"	2.50"	0.19"	1.72"	4	3.88"	4	0.75"
1 1/2"	6.13"	0.81"	1.19"	2.75"	0.25"	1.97"	6	4.50"	4	0.88"
2"	6.50"	0.88"	1.31"	3.31"	0.31"	2.46"	7	5.00"	8	0.75"
2 1/2"	7.50"	1.00"	1.50"	3.94"	0.31"	2.97"	10	5.88"	8	0.88"
3"	8.25"	1.13"	1.69"	4.63"	0.38"	3.60"	13	6.63"	8	0.88"
3 1/2"	9.00"	1.19"	1.75"	5.25"	0.38"	4.10"	17	7.25"	8	0.88"
4"	10.00"	1.25"	1.88"	5.75"	0.44"	4.60"	22	7.88"	8	0.88"
5"	11.00"	1.38"	2.00"	7.00"	0.44"	5.69"	28	9.25"	8	0.88"
6"	12.50"	1.44"	2.06"	8.13"	0.50"	6.75"	39	10.63"	12	0.88"
8"	15.00"	1.63"	2.44"	10.25"	0.50"	8.75"	58	13.00"	12	1.00"
10"	17.50"	1.88"	3.75"	12.63"	0.50"	10.92"	91	15.25"	16	1.13"
12"	20.50"	2.00"	4.00"	14.75"	0.50"	12.92"	140	17.75"	16	1.25"
14"	23.00"	2.13"	4.38"	16.75"	0.50"	14.18"	190	20.25"	20	1.25"
16"	25.50"	2.25"	4.75"	19.00"	0.50"	16.19"	250	22.50"	20	1.38"
18"	28.00"	2.38"	5.13"	21.00"	0.50"	18.20"	295	24.75"	24	1.38"
20"	30.50"	2.50"	5.50"	23.13"	0.50"	20.25"	370	27.00"	24	1.38"
22"	33.00"	2.63"	5.75"	25.25"	0.50"	22.25"	435	29.25"	24	1.63"
24"	36.00"	2.75"	6.00"	27.63"	0.50"	24.25"	550	32.00"	24	1.63"

FLANGES

ANSI B16.5 CLASS 300 SOCKET-WELD FLANGES

Nominal Pipe Size	Outside Diameter (O)	Thick-ness (T)	Raised Face Diameter (R)	Length Thru Hub (Y)	Hub Diameter (X)	Bore (B ₁)	Bore (B ₂)	Depth of Socket (D)	Approximate Weight (lbs)	Bolt Circle (C)	Number of Holes	Diameter of Holes
inch	inch	inch	inch	inch	inch	inch	inch	inch	lbs	inch	count	inch
1/2"	3.75"	0.56"	1.38"	0.88"	1.50"	0.62"	0.88"	0.38"	2	2.63"	4	0.63"
3/4"	4.63"	0.63"	1.69"	1.00"	1.88"	0.82"	1.09"	0.44"	3	3.25"	4	0.75"
1"	4.88"	0.69"	2.00"	1.06"	2.13"	1.05"	1.36"	0.50"	3	3.50"	4	0.75"
1 1/4"	5.25"	0.75"	2.50"	1.06"	2.50"	1.38"	1.70"	0.56"	4	3.88"	4	0.75"
1 1/2"	6.13"	0.81"	2.88"	1.19"	2.75"	1.61"	1.95"	0.63"	6	4.50"	4	0.88"
2"	6.50"	0.88"	3.63"	1.31"	3.31"	2.07"	2.44"	0.69"	7	5.00"	8	0.75"
2 1/2"	7.50"	1.00"	4.13"	1.50"	3.94"	2.47"	2.94"	0.75"	10	5.88"	8	0.88"
3"	8.25"	1.13"	5.00"	1.69"	4.63"	3.07"	3.57"	0.81"	13	6.63"	8	0.88"



All dimensions are in inches.

These flanges will be supplied with a 1/16" raised face unless otherwise specified.

Flat face option available.

Standard Bore will be furnished unless otherwise specified.