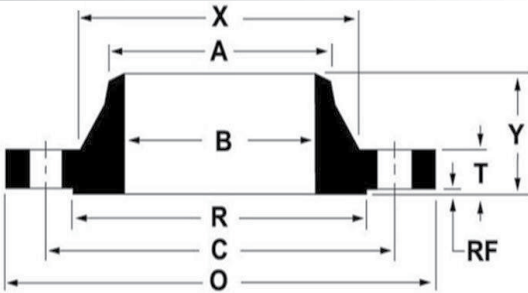


FLANGES

ANSI B16.5 CLASS 150 WELDING NECK FLANGES



All dimensions are in inches.

These flanges will be supplied with a 1/16" raised face unless otherwise specified.

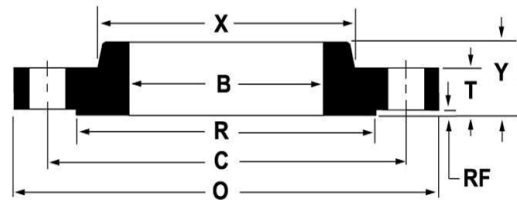
Flat face option available.

Standard Bore will be finished unless otherwise specified.

Nominal Pipe Size	Outside Diameter (O)	Thickness (T)	Raised Face Diameter (R)	Length Thru Hub (Y)	Point of Weld (A)	Hub Diameter (X)	Bore (B)	Approximate Weight (lbs)	Bolt Circle (C)	Number of Holes	Diameter of Holes
inch	inch	inch	inch	inch	inch	inch	inch	lbs	inch	count	inch
1/2"	3.50"	0.44"	1.38"	1.88"	0.84"	1.19"	0.62"	2	2.38"	4	0.63"
3/4"	3.88"	0.50"	1.69"	2.06"	1.05"	1.50"	0.82"	2	2.75"	4	0.63"
1"	4.25"	0.56"	2.00"	2.19"	1.32"	1.94"	1.05"	3	3.13"	4	0.63"
1 1/4"	4.63"	0.63"	2.50"	2.25"	1.66"	2.31"	1.38"	3	3.50"	4	0.63"
1 1/2"	5.00"	0.69"	2.88"	2.44"	1.90"	2.56"	1.61"	4	3.88"	4	0.63"
2"	6.00"	0.75"	3.63"	2.50"	2.38"	3.06"	2.07"	6	4.75"	4	0.75"
2 1/2"	7.00"	0.88"	4.13"	2.75"	2.88"	3.56"	2.47"	8	5.50"	4	0.75"
3"	7.50"	0.94"	5.00"	2.75"	3.50"	4.25"	3.07"	10	6.00"	4	0.75"
3 1/2"	8.50"	0.94"	5.50"	2.81"	4.00"	4.81"	3.55"	12	7.00"	8	0.75"
4"	9.00"	0.94"	6.19"	3.00"	4.50"	5.31"	4.03"	15	7.50"	8	0.75"
5"	10.00"	0.94"	7.31"	3.50"	5.56"	6.44"	5.05"	19	8.50"	8	0.88"
6"	11.00"	1.00"	8.50"	3.50"	6.63"	7.56"	6.07"	24	9.50"	8	0.88"
8"	13.50"	1.13"	10.63"	4.00"	8.63"	9.69"	7.98"	39	11.75"	8	0.88"
10"	16.00"	1.19"	12.75"	4.00"	10.75"	12.00"	10.02"	52	14.25"	12	1.00"
12"	19.00"	1.25"	15.00"	4.50"	12.75"	14.38"	12.00"	80	17.00"	12	1.00"
14"	21.00"	1.38"	16.25"	5.00"	14.00"	15.75"	13.25"	110	18.75"	12	1.13"
16"	23.50"	1.44"	18.50"	5.00"	16.00"	18.00"	15.25"	140	21.25"	16	1.13"
18"	25.00"	1.56"	21.00"	5.50"	18.00"	19.88"	17.25"	150	22.75"	16	1.25"
20"	27.50"	1.69"	23.00"	5.69"	20.00"	22.00"	19.25"	180	25.00"	20	1.25"
22"	29.50"	1.81"	25.25"	5.88"	22.00"	24.25"	21.25"	225	27.25"	20	1.38"
24"	32.00"	1.88"	27.25"	6.00"	24.00"	26.13"	23.25"	260	29.50"	20	1.38"

FLANGES

ANSI B16.5 CLASS 150 SLIP-ON FLANGES



All dimensions are in inches.

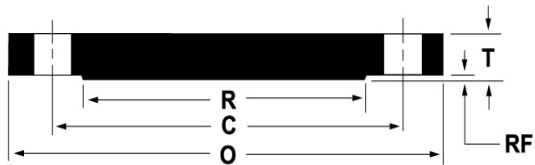
These flanges will be supplied with a 1/16" raised face unless otherwise specified.

Flat face option available

Nominal Pipe Size	Outside Diameter (O)	Thickness (T)	Raised Face Diameter (R)	Length Thru Hub (Y)	Hub Diameter (X)	Bore (B)	Approximate Weight (lbs)	Bolt Circle (C)	Number of Holes	Diameter of Holes
inch	inch	inch	inch	inch	inch	inch	lbs	inch	count	inch
1/2"	3.50"	0.44"	1.38"	0.63"	1.19"	0.88"	1	2.38"	4	0.63"
3/4"	3.88"	0.50"	1.69"	0.63"	1.50"	1.09"	2	2.75"	4	0.63"
1"	4.25"	0.56"	2.00"	0.69"	1.94"	1.36"	2	3.13"	4	0.63"
1 1/4"	4.63"	0.63"	2.50"	0.81"	2.31"	1.70"	3	3.50"	4	0.63"
1 1/2"	5.00"	0.69"	2.88"	0.88"	2.56"	1.95"	3	3.88"	4	0.63"
2"	6.00"	0.75"	3.63"	1.00"	3.06"	2.44"	5	4.75"	4	0.75"
2 1/2"	7.00"	0.88"	4.13"	1.13"	3.56"	2.94"	7	5.50"	4	0.75"
3"	7.50"	0.94"	5.00"	1.19"	4.25"	3.57"	8	6.00"	4	0.75"
3 1/2"	8.50"	0.94"	5.50"	1.25"	4.81"	4.07"	11	7.00"	8	0.75"
4"	9.00"	0.94"	6.19"	1.31"	5.31"	4.57"	13	7.50"	8	0.75"
5"	10.00"	0.94"	7.31"	1.44"	6.44"	5.66"	15	8.50"	8	0.88"
6"	11.00"	1.00"	8.50"	1.56"	7.56"	6.72"	19	9.50"	8	0.88"
8"	13.50"	1.13"	10.63"	1.75"	9.69"	8.72"	30	11.75"	8	0.88"
10"	16.00"	1.19"	12.75"	1.94"	12.00"	10.88"	43	14.25"	12	1.00"
12"	19.00"	1.25"	15.00"	2.19"	14.38"	12.88"	64	17.00"	12	1.00"
14"	21.00"	1.38"	16.25"	2.25"	15.75"	14.14"	90	18.75"	12	1.13"
16"	23.50"	1.44"	18.50"	2.50"	18.00"	16.16"	98	21.25"	16	1.13"
18"	25.00"	1.56"	21.00"	2.69"	19.88"	18.18"	130	22.75"	16	1.25"
20"	27.50"	1.69"	23.00"	2.88"	22.00"	20.20"	165	25.00"	20	1.25"
22"	29.50"	1.81"	25.25"	3.13"	24.25"	22.22"	185	27.25"	20	1.38"
24"	32.00"	1.88"	27.25"	3.25"	26.13"	24.25"	220	29.50"	20	1.38"

FLANGES

ANSI B16.5 CLASS 150 BLIND FLANGES



Nominal Pipe Size	Outside Diameter (O)	Thickness (T)	Raised Face Diameter (R)	Approximate Weight (lbs)	Bolt Circle (C)	Number of Holes	Diameter of Holes
inch	inch	inch	inch	lbs	inch	count	inch
1/2"	3.50"	0.44"	1.38"	1	2.38"	4	0.63"
3/4"	3.88"	0.50"	1.69"	2	2.75"	4	0.63"
1"	4.25"	0.56"	2.00"	2	3.13"	4	0.63"
1 1/4"	4.63"	0.63"	2.50"	3	3.50"	4	0.63"
1 1/2"	5.00"	0.69"	2.88"	4	3.88"	4	0.63"
2"	6.00"	0.75"	3.63"	5	4.75"	4	0.75"
2 1/2"	7.00"	0.88"	4.13"	7	5.50"	4	0.75"
3"	7.50"	0.94"	5.00"	9	6.00"	4	0.75"
3 1/2"	8.50"	0.94"	5.50"	13	7.00"	8	0.75"
4"	9.00"	0.94"	6.19"	17	7.50"	8	0.75"
5"	10.00"	0.94"	7.31"	20	8.50"	8	0.88"
6"	11.00"	1.00"	8.50"	26	9.50"	8	0.88"
8"	13.50"	1.13"	10.63"	45	11.75"	8	0.88"
10"	16.00"	1.19"	12.75"	70	14.25"	12	1.00"
12"	19.00"	1.25"	15.00"	110	17.00"	12	1.00"
14"	21.00"	1.38"	16.25"	140	18.75"	12	1.13"
16"	23.50"	1.44"	18.50"	180	21.25"	16	1.13"
18"	25.00"	1.56"	21.00"	220	22.75"	16	1.25"
20"	27.50"	1.69"	23.00"	285	25.00"	20	1.25"
22"	29.50"	1.81"	25.25"	355	27.25"	20	1.38"
24"	32.00"	1.88"	27.25"	430	29.50"	20	1.38"

All dimensions are in inches.

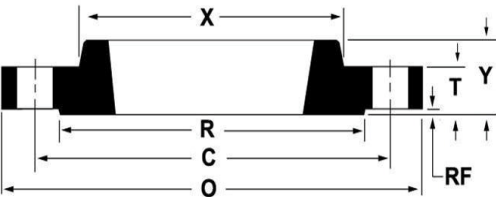
These flanges will be supplied with a 1/16" raised face unless otherwise specified.

Flat face option available

FLANGES

ANSI B16.5 CLASS 150 THREADED FLANGES

Nominal Pipe Size	Outside Diameter (O)	Thickness (T)	Raised Face Diameter (R)	Length Thru Hub (Y)	Hub Diameter (X)	Approximate Weight (lbs)	Bolt Circle (C)	Number of Holes	Diameter of Holes
inch	inch	inch	inch	inch	inch	lbs	inch	count	inch
1/2"	3.50"	0.44"	1.38"	0.63"	1.19"	1	2.38"	4	0.63"
3/4"	3.88"	0.50"	1.69"	0.63"	1.50"	2	2.75"	4	0.63"
1"	4.25"	0.56"	2.00"	0.69"	1.94"	2	3.13"	4	0.63"
1 1/4"	4.63"	0.63"	2.50"	0.81"	2.31"	3	3.50"	4	0.63"
1 1/2"	5.00"	0.69"	2.88"	0.88"	2.56"	3	3.88"	4	0.63"
2"	6.00"	0.75"	3.63"	1.00"	3.06"	5	4.75"	4	0.75"
2 1/2"	7.00"	0.88"	4.13"	1.13"	3.56"	7	5.50"	4	0.75"
3"	7.50"	0.94"	5.00"	1.19"	4.25"	8	6.00"	4	0.75"
3 1/2"	8.50"	0.94"	5.50"	1.25"	4.81"	11	7.00"	8	0.75"
4"	9.00"	0.94"	6.19"	1.31"	5.31"	13	7.50"	8	0.75"
5"	10.00"	0.94"	7.31"	1.44"	6.44"	15	8.50"	8	0.88"
6"	11.00"	1.00"	8.50"	1.56"	7.56"	19	9.50"	8	0.88"
8"	13.50"	1.13"	10.63"	1.75"	9.69"	30	11.75"	8	0.88"
10"	16.00"	1.19"	12.75"	1.94"	12.00"	43	14.25"	12	1.00"
12"	19.00"	1.25"	15.00"	2.19"	14.38"	64	17.00"	12	1.00"
14"	21.00"	1.38"	16.25"	2.25"	15.75"	90	18.75"	12	1.13"
16"	23.50"	1.44"	18.50"	2.50"	18.00"	98	21.25"	16	1.13"
18"	25.00"	1.56"	21.00"	2.69"	19.88"	130	22.75"	16	1.25"
20"	27.50"	1.69"	23.00"	2.88"	22.00"	165	25.00"	20	1.25"
22"	29.50"	1.81"	25.25"	3.13"	24.25"	185	27.25"	20	1.38"
24"	32.00"	1.88"	27.25"	3.25"	26.13"	220	29.50"	20	1.38"



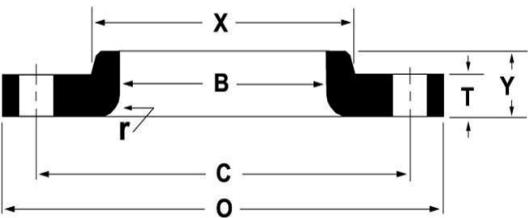
All dimensions are in inches.

These flanges will be supplied with a 1/16" raised face unless otherwise specified.

Flat face option available

FLANGES

ANSI B16.5 CLASS 150 LAP JOINT FLANGES

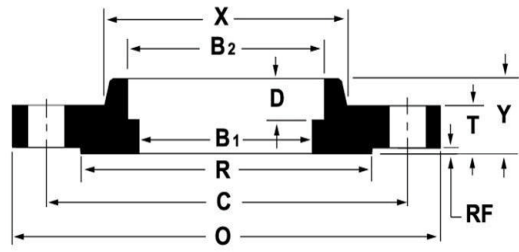


All dimensions are in inches.

Nominal Pipe Size	Outside Diameter (O)	Thickness (T)	Length Thru Hub (Y)	Hub Diameter (X)	Radius (r)	Bore (B)	Approximate Weight (lbs)	Bolt Circle (C)	Number of Holes	Diameter of Holes
inch	inch	inch	inch	inch	inch	inch	lbs	inch	count	inch
1/2"	3.50"	0.44"	0.63"	1.19"	0.13"	0.90"	1	2.38"	4	0.63"
3/4"	3.88"	0.50"	0.63"	1.50"	0.13"	1.11"	2	2.75"	4	0.63"
1"	4.25"	0.56"	0.69"	1.94"	0.13"	1.38"	2	3.13"	4	0.63"
1 1/4"	4.63"	0.63"	0.81"	2.31"	0.19"	1.72"	3	3.50"	4	0.63"
1 1/2"	5.00"	0.69"	0.88"	2.56"	0.25"	1.97"	3	3.88"	4	0.63"
2"	6.00"	0.75"	1.00"	3.06"	0.31"	2.46"	5	4.75"	4	0.75"
2 1/2"	7.00"	0.88"	1.13"	3.56"	0.31"	2.97"	7	5.50"	4	0.75"
3"	7.50"	0.94"	1.19"	4.25"	0.38"	3.60"	8	6.00"	4	0.75"
3 1/2"	8.50"	0.94"	1.25"	4.81"	0.38"	4.10"	11	7.00"	8	0.75"
4"	9.00"	0.94"	1.31"	5.31"	0.44"	4.60"	13	7.50"	8	0.75"
5"	10.00"	0.94"	1.44"	6.44"	0.44"	5.69"	15	8.50"	8	0.88"
6"	11.00"	1.00"	1.56"	7.56"	0.50"	6.75"	19	9.50"	8	0.88"
8"	13.50"	1.13"	1.75"	9.69"	0.50"	8.75"	30	11.75"	8	0.88"
10"	16.00"	1.19"	1.94"	12.00"	0.50"	10.92"	43	14.25"	12	1.00"
12"	19.00"	1.25"	2.19"	14.38"	0.50"	12.92"	64	17.00"	12	1.00"
14"	21.00"	1.38"	3.13"	15.75"	0.50"	14.18"	105	18.75"	12	1.13"
16"	23.50"	1.44"	3.44"	18.00"	0.50"	16.19"	140	21.25"	16	1.13"
18"	25.00"	1.56"	2.88"	19.88"	0.50"	18.20"	160	22.75"	16	1.25"
20"	27.50"	1.69"	4.06"	22.00"	0.50"	20.25"	195	25.00"	20	1.25"
22"	29.50"	1.81"	4.25"	24.25"	0.50"	22.25"	245	27.25"	20	1.38"
24"	32.00"	1.88"	4.38"	26.13"	0.50"	24.25"	275	29.50"	20	1.38"

FLANGES

ANSI B16.5 CLASS 150 SOCKET-WELD FLANGES



All dimensions are in inches.

These flanges will be supplied with a 1/16" raised face unless otherwise specified.

Flat face option available.

Standard Bore will be furnished unless otherwise specified.

Nominal Pipe Size	Outside Diameter (O)	Thick-ness (T)	Raised Face Diameter (R)	Length Thru Hub (Y)	Hub Diameter (X)	Bore (B ₁)	Bore (B ₂)	Depth of Socket (D)	Approximate Weight (lbs)	Bolt Circle (C)	Number of Holes	Diameter of Holes
inch	inch	inch	inch	inch	inch	inch	inch	inch	lbs	inch	count	inch
1/2"	3.50"	0.44"	1.38"	0.63"	1.19"	0.62"	0.88"	0.38"	1	2.38"	4	0.63"
3/4"	3.88"	0.50"	1.69"	0.63"	1.50"	0.82"	1.09"	0.44"	2	2.75"	4	0.63"
1"	4.25"	0.56"	2.00"	0.69"	1.94"	1.05"	1.36"	0.50"	2	3.13"	4	0.63"
1 1/4"	4.63"	0.63"	2.50"	0.81"	2.31"	1.38"	1.70"	0.56"	3	3.50"	4	0.63"
1 1/2"	5.00"	0.69"	2.88"	0.88"	2.56"	1.61"	1.95"	0.63"	3	3.88"	4	0.63"
2"	6.00"	0.75"	3.63"	1.00"	3.06"	2.07"	2.44"	0.69"	5	4.75"	4	0.75"
2 1/2"	7.00"	0.88"	4.13"	1.13"	3.56"	2.47"	2.94"	0.75"	7	5.50"	4	0.75"
3"	7.50"	0.94"	5.00"	1.19"	4.25"	3.07"	3.57"	0.81"	8	6.00"	4	0.75"
3 1/2"	8.50"	0.94"	5.50"	1.25"	4.81"	3.55"	4.07"	0.88"	11	7.00"	8	0.75"
4"	9.00"	0.94"	6.19"	1.31"	5.31"	4.03"	4.57"	0.94"	13	7.50"	8	0.75"
5"	10.00"	0.94"	7.31"	1.44"	6.44"	5.05"	5.66"	0.94"	15	8.50"	8	0.88"
6"	11.00"	1.00"	8.50"	1.56"	7.56"	6.07"	6.72"	1.06"	19	9.50"	8	0.88"
8"	13.50"	1.13"	10.63"	1.75"	9.69"	7.98"	8.72"	1.25"	30	11.75"	8	0.88"
10"	16.00"	1.19"	12.75"	1.94"	12.00"	10.02"	10.88"	1.31"	43	14.25"	12	1.00"
12"	19.00"	1.25"	15.00"	2.19"	14.38"	12.00"	12.88"	1.56"	64	17.00"	12	1.00"
14"	21.00"	1.38"	16.25"	2.25"	15.75"	13.25"	14.14"	1.63"	90	18.75"	12	1.13"
16"	23.50"	1.44"	18.50"	2.50"	18.00"	15.25"	16.16"	1.75"	98	21.25"	16	1.13"
18"	25.00"	1.56"	21.00"	2.69"	19.88"	17.25"	18.18"	1.94"	130	22.75"	16	1.25"
20"	27.50"	1.69"	23.00"	2.88"	22.00"	19.25"	20.20"	2.13"	165	25.00"	20	1.25"
22"	29.50"	1.81"	25.25"	3.13"	24.25"	21.25"	22.22"	2.38"	185	27.25"	20	1.38"
24"	32.00"	1.88"	27.25"	3.25"	26.13"	23.25"	24.25"	2.50"	220	29.50"	20	1.38"